

This PDF includes the following:

- Diagrams of Common Indoor and Outdoor Setups Demonstrating # of Tables/Seating per space
- Photos of Event Setups in these same spaces
- Photos of Some of the Decorations and Serving Items we have for guests to use

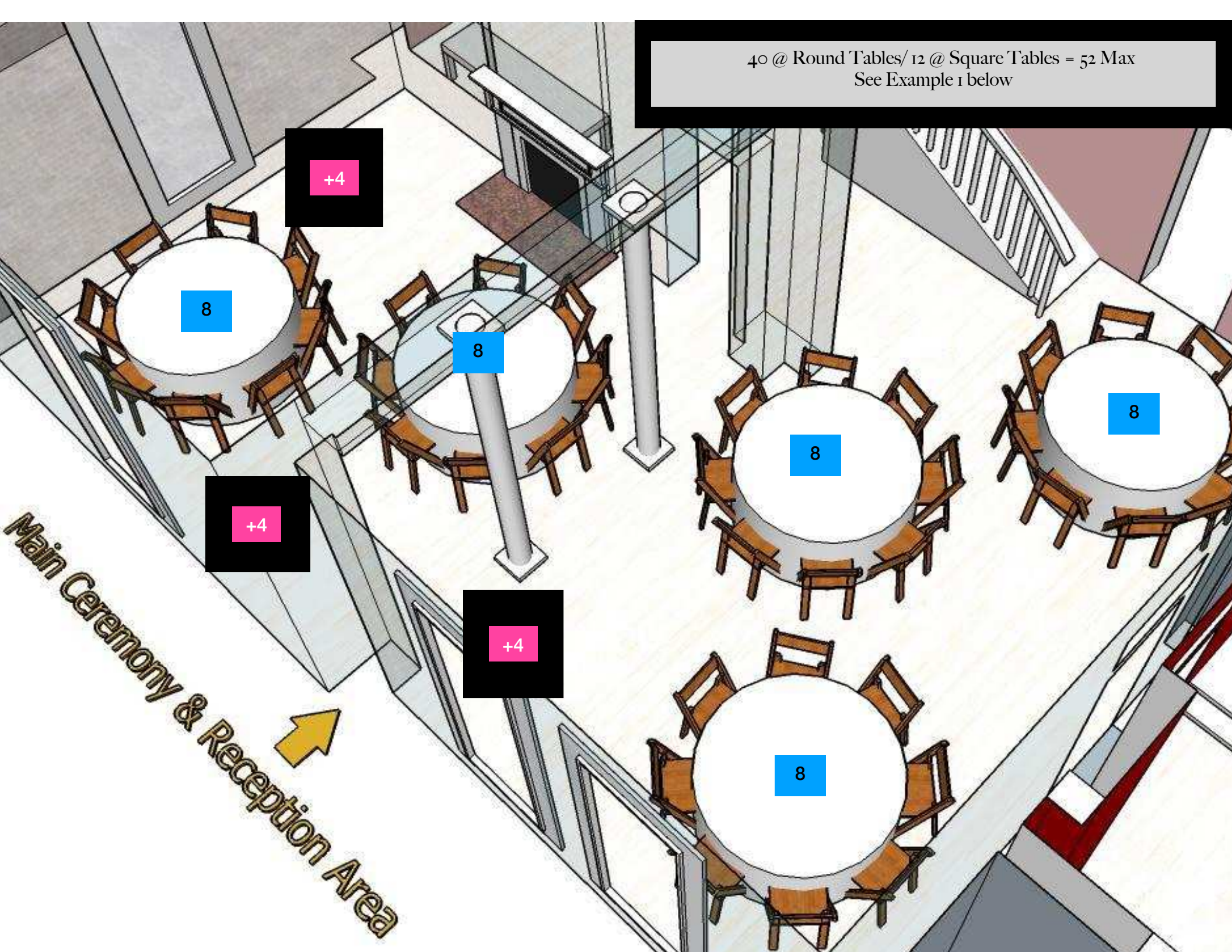
For exact Dimensions and Inventory of Tables, Chairs, and More please visit:  
[www.historicanns1893.com](http://www.historicanns1893.com) and Select the RESOURCES menu. Scroll down to “Indoor Furniture Inventory”

There are additional helpful dropdown menus with more information below that as well.

We hope this helps you in the planning of your event.



40 @ Round Tables/ 12 @ Square Tables = 52 Max  
See Example 1 below



8

+4

8

+4

8

8

+4

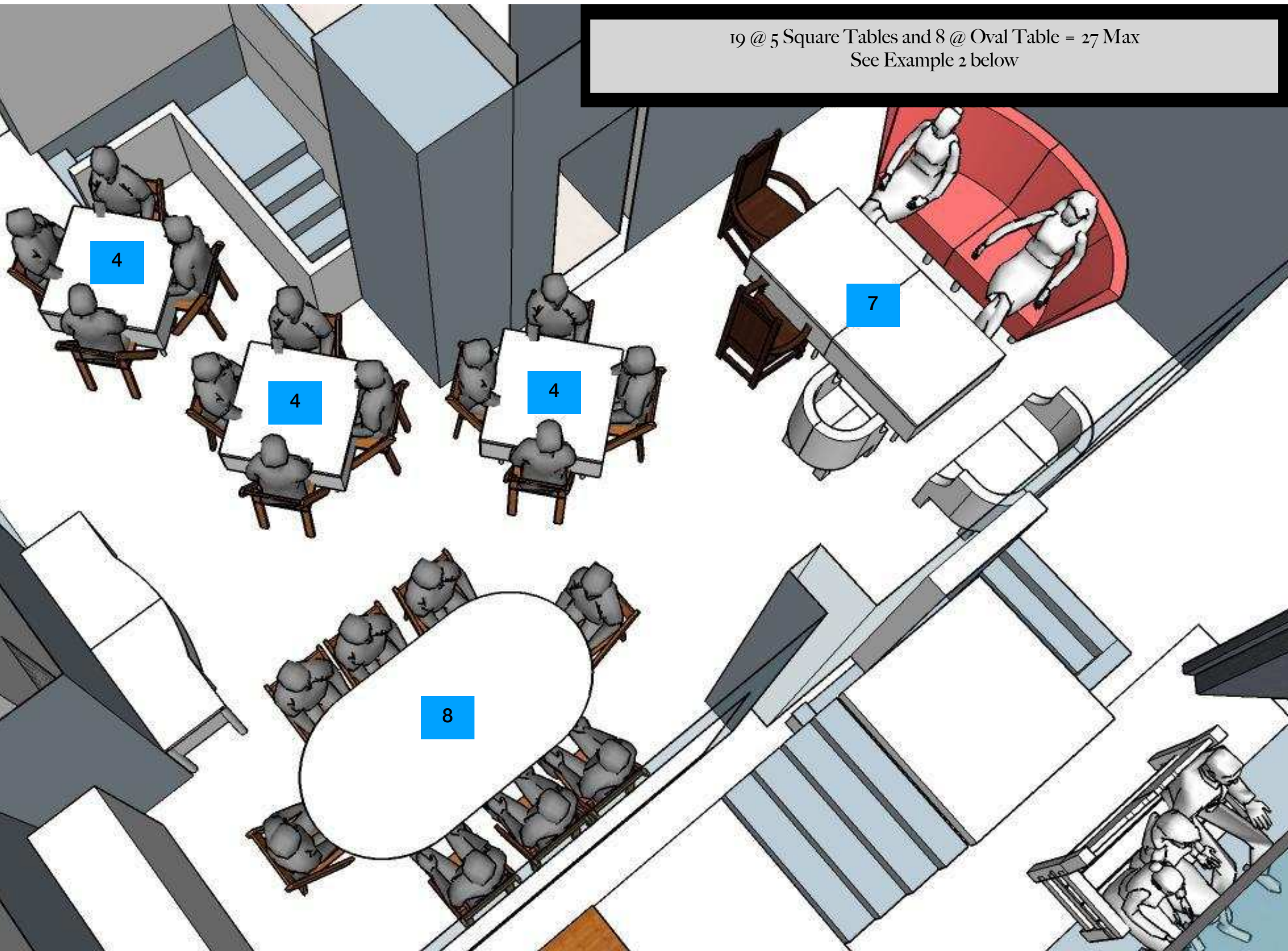
8

Main Ceremony & Reception Area



19 @ 5 Square Tables and 8 @ Oval Table = 27 Max

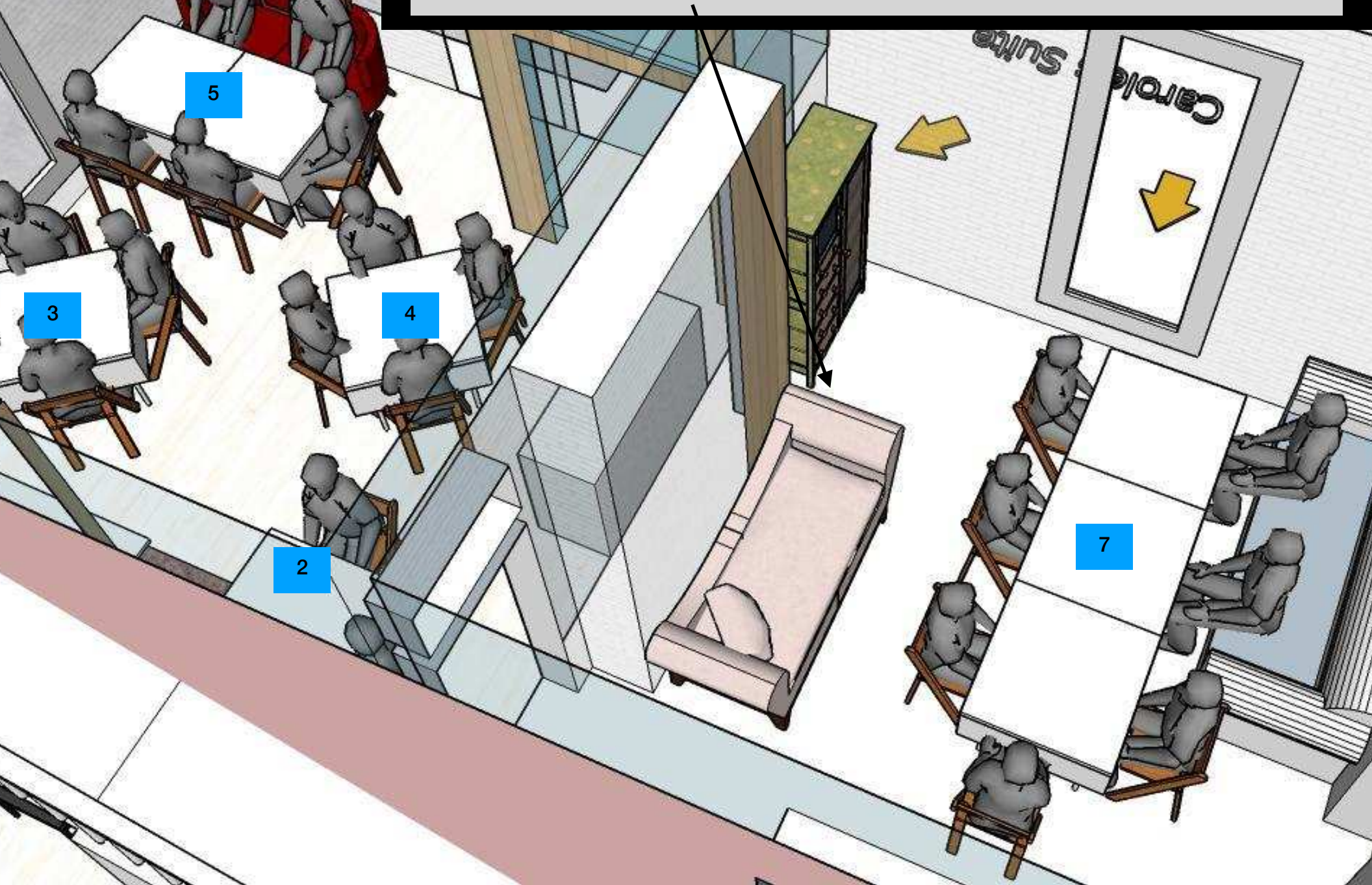
See Example 2 below





21@ 8 Square tables = 21 Max

Can also configure this room to have 6 tables set up horizontally with 2 people at each = 12 but must move pink chaise to other area. See Examples 3 and 4 below.

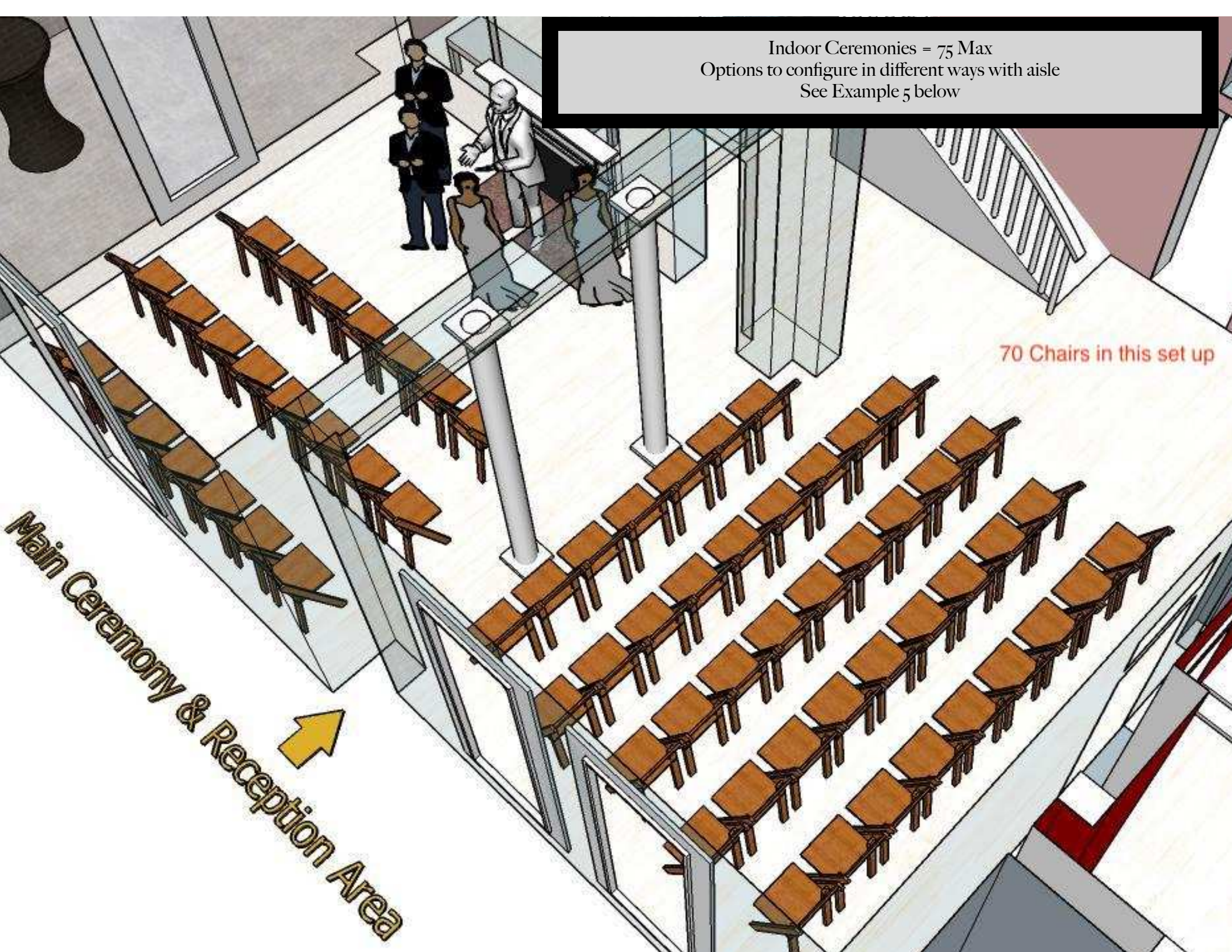




Indoor Ceremonies = 75 Max  
Options to configure in different ways with aisle  
See Example 5 below

70 Chairs in this set up

Main Ceremony & Reception Area



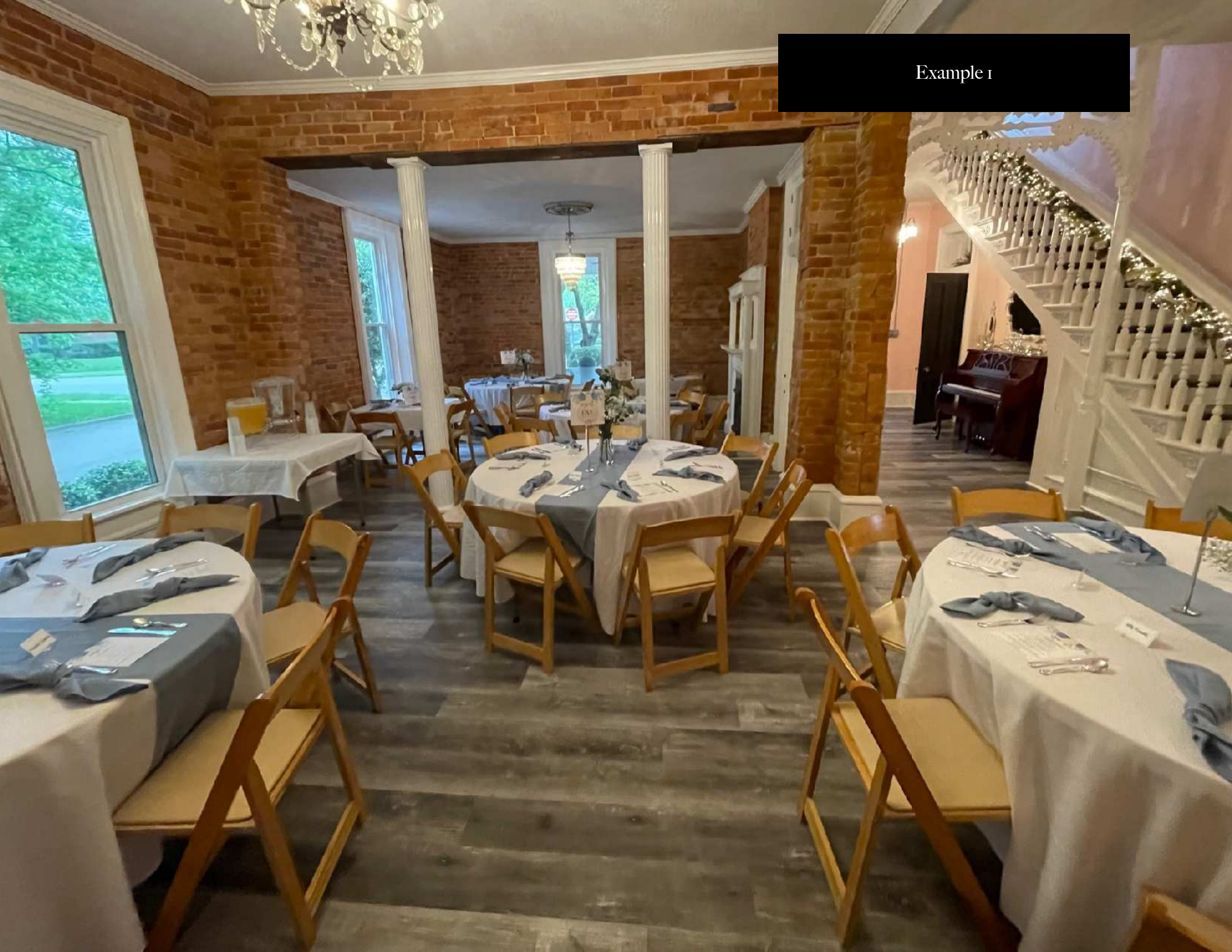


Our Events are 150 PERSONS MAX.  
100 Max Seating on the Main Floor.  
Additional seating for 50 more if additional 2 floors and outdoor spaces are utilized.





Example 1





Example 2





Example 3 w/chaise moved for additional tables



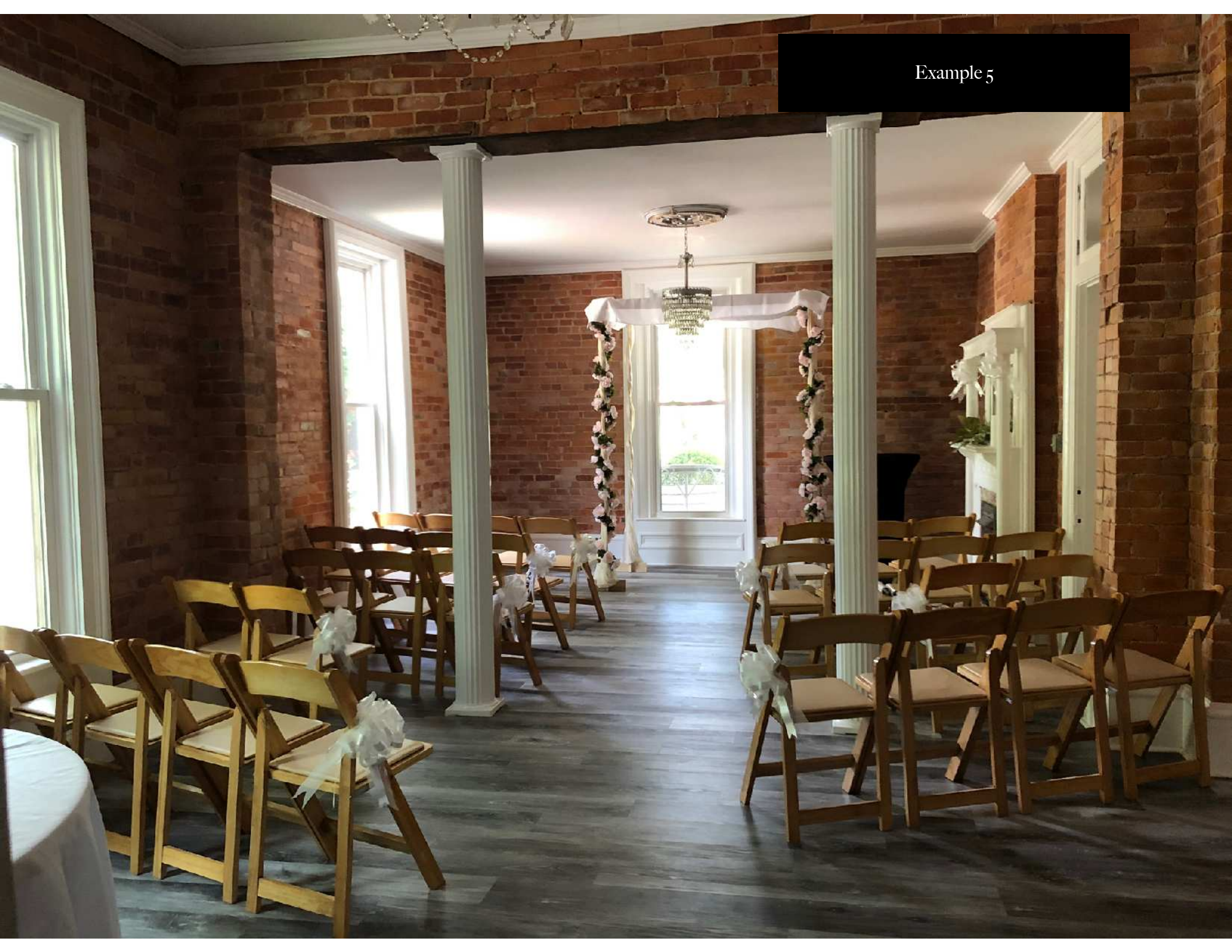


Example 4  
Additional table not pictured





Example 5





10 Cocktail Tables may be moved inside as needed.  
Typical setup is putting 8 of them around the perimeter and then dancing in the middle.  
Long wide brick wall for additional seating.

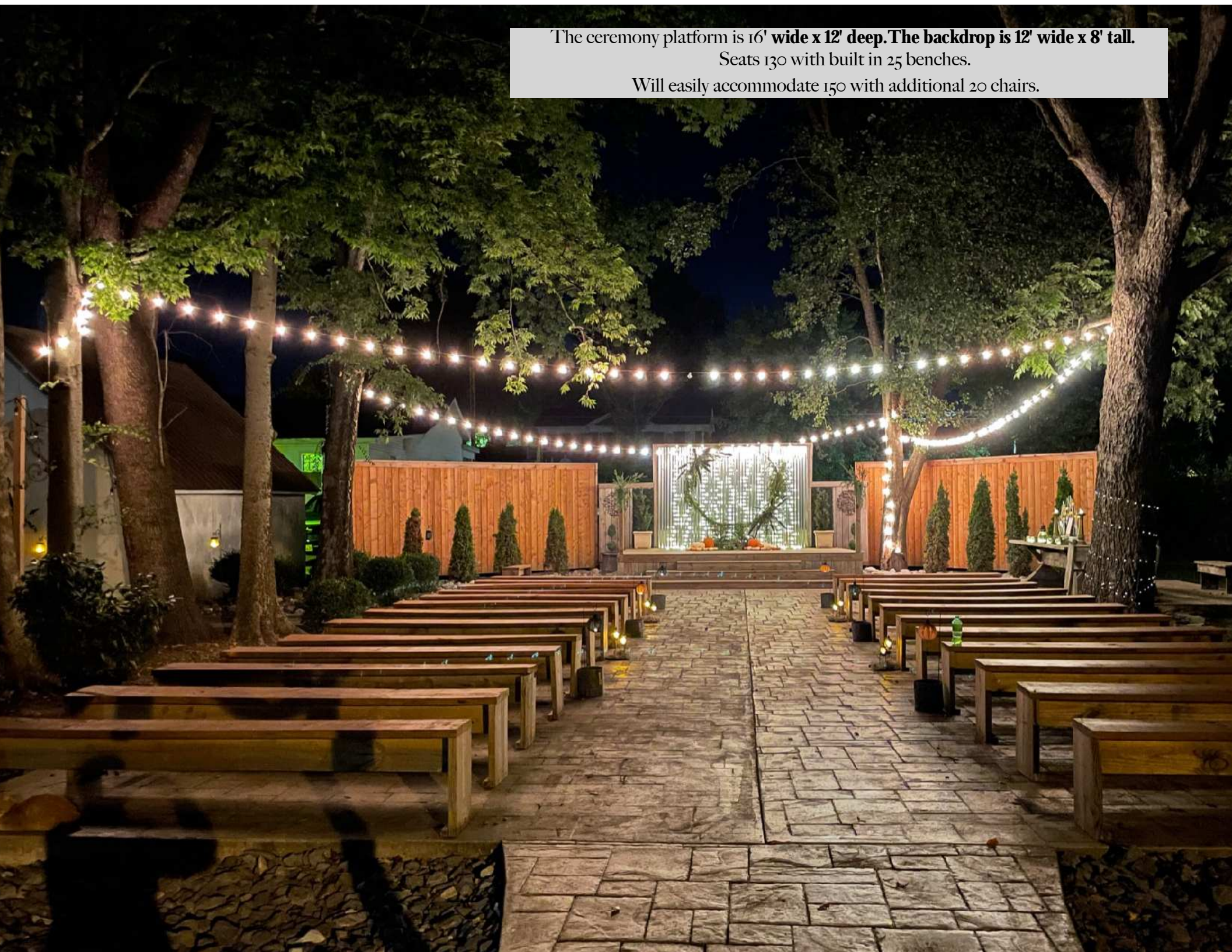





The ceremony platform is 16' wide x 12' deep. The backdrop is 12' wide x 8' tall.

Seats 130 with built in 25 benches.

Will easily accommodate 150 with additional 20 chairs.



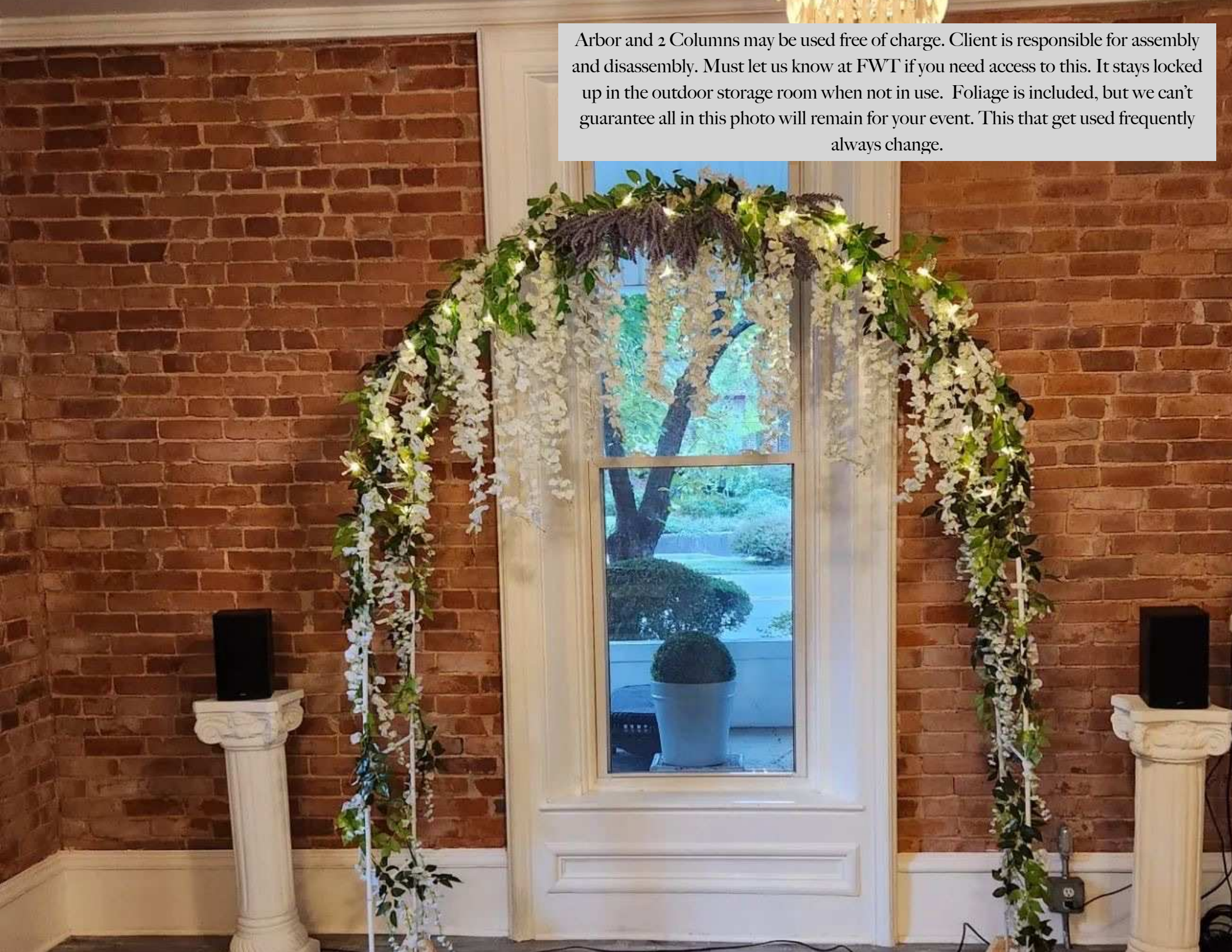


A photograph of an outdoor patio at night. The patio is covered by a wooden pergola structure with several strings of warm white LED string lights hanging from it. The lights are illuminated, creating a warm glow. In the foreground, there is a stone-paved walkway leading towards the patio. To the right, a large wooden structure, likely a bar or refrigerator, is visible. The background features a white lattice fence and dense green foliage. The overall atmosphere is cozy and inviting.

Large Bar with shelving may be moved  
We also have 2 Medium Beverage Bins and an Outdoor  
Refrigerators



Arbor and 2 Columns may be used free of charge. Client is responsible for assembly and disassembly. Must let us know at FWT if you need access to this. It stays locked up in the outdoor storage room when not in use. Foliage is included, but we can't guarantee all in this photo will remain for your event. This that get used frequently always change.





Below are photos of additional decorations at the venue. All may be used free of charge as long as they are returned clean and exactly where they were found. Inventory changes frequently as items are sometimes broken or taken, and additional items may be added or donated from previous events. As a result, Historic Ann's 1893 does NOT guarantee that all items below will be available for your event. It is advised that you come personally to look through our storage area to ensure items you wish to use are still there.

FOR EXACT MEASUREMENTS and PRECISE #s of TABLES/CHAIRS, and MORE

[www.historicanns1893.com](http://www.historicanns1893.com)

SELECT "RESOURCES"

See "INDOOR FURNITURE INVENTORY" AND ADDITIONAL SPECS BELOW THAT MENU ITEM









